

SEA EAGLE.com[®]



Frameless Pontoon Boat

Sea Eagle 285 FPB

Instruction & Owner's Manual

For video instructions visit SeaEagle.com/Instructions

Sea Eagle Boats Inc.
19 N. Columbia Street, Suite 1
Port Jefferson, NY 11777
1-800-748-8066

January 2013



Sea Eagle Guarantee

Congratulations on purchasing a Sea Eagle! With over 40 years of experience in designing, selling and using these quality inflatables, we're confident that you are going to love your Sea Eagle and we're ready to proudly stand behind them.

Sea Eagle Warranty

All Sea Eagle products come standard with a 3 year warranty against any manufacturing defect that begins the date that your product is delivered. Sea Eagle will refuse delivery on all packages without a valid return authorization number and will not be responsible for the shipping or handling charges. To obtain a return authorization number, please contact Sea Eagle directly unless you purchased from an authorized dealer/reseller in which case you should contact them for more information.

Sea Eagle must inspect equipment in order to determine if there is a defect. In the event that an item must be shipped back to us for inspection, Sea Eagle will only reimburse the standard return shipping charge through FedEx, UPS or the U.S. Post Office at published shipping rates. Retail shipping outlets like The UPS Store will not be reimbursed and you will be responsible for handling and packing charges.

The Sea Eagle warranty does not apply to products that are manufactured by Minn Kota or Torqeedo. These products are covered by their own, respective warranties. Please refer to the manufacturer's warranty of each product for details.

If you received an item damaged, please call the shipping carrier to report damaged merchandise. Do not return damaged merchandise until it has been inspected by the carrier. Sea Eagle will be notified by the carrier when they have completed their inspection and if necessary, Sea Eagle will arrange for the repair or replacement of damaged merchandise.

Decals, Stickers & Registration

Always contact your state boating authorities for information on boating registration and regulations. Most states require you to register your boat if you are using a motor.*

Upon registration it may be required to provide the Manufacturer's Statement of Origin.

Purchases made through an authorized dealer or reseller may require for you to contact them directly in order to obtain this. You may be charged your own state sales tax if you were not charged sales tax at the time of purchase.

Registered boats generally require for the registration number to be applied to the boat. We do not recommend the use of decals or stickers as they tend to crack and peel over time with the repeated inflation and deflation of your Sea Eagle. Instead we suggest applying these numbers to a small piece of hard plastic or marine plywood and hanging it from your boat like a license plate if permitted by your state. Another method is to apply the numbers to the hull using either PVC based paint or permanent marker.

**** Please note that our Sea Eagle Explorer Kayaks, FastTrack Kayaks, Sport Kayaks and LB-11 LongBoard are not rated for use with a motor.***

Contact Us

Unlike many other companies today we pride ourselves on answering the phone and helping you with any concerns, questions or special ordering needs that you may have!

Feel free to give us a call at 1-800-748-8066 and we will be happy to talk with you!
Our business hours are Monday to Friday from 9-5 (EST).

Sea Eagle Boats Inc.
19 N. Columbia Street, Suite 1
Port Jefferson NY 11777
1-800-748-8066
staff@seaeagle.com

Operating Your Sea Eagle

Motoring

If your Sea Eagle Frameless Pontoon Boat comes equipped with a motor mount that can be used with either an electric or gas motor. Since only the pontoons and the tube under the rear are in touch with the water, there is less drag so the 285 FPB motors very well with small outboard motors. The 285 FPB has been rated by the National Marine Manufacturer's Association for a motors maximum capacity for both dry weight and horsepower. Under no circumstance should you equip a motor that exceeds these capacities (whether they be for the dry weight or the horsepower or both).

Not only can this result in damaging your Sea Eagle Frameless Pontoon Boat, it will also void your Sea Eagle warranty.

Gas motors are measured in units of horsepower and are generally built with power and speed in mind. The 285 FPB has been rated for use with a 3HP gas motor with a maximum weight capacity of 45 lbs. For the best performance with the Frameless Pontoon Boat we recommend using a 15" short shaft, although a longer shaft can be used in greater depths of water.

Traditional electric motors are measured in units of thrust (the pulling or pushing power of a motor) and are slower and quieter on the water than gas motors. There is no direct correlation of thrust to horsepower although most consider traditional electric motors to be about a 1HP (which is more of a guess than an approximation). The 285 FPB can use anything up to a 74 lb. thrust electric motor.

Advantages of having an electric motor over a gas is that they are lighter to transport and easier to maintain. In order to operate an electric motor you will need a 12V deep cycle marine battery. Other suggested accessories are a battery charger and a battery power center to house the battery itself.

The Torqeedo Travel 1003s electric motor is unlike any other electric motor on the market today. Powered by a waterproof lithium ion battery (battery charger included), the Travel 1003s delivers the true 3HP performance of a gas motor! Features include on board computer display, GPS and an audible alarm when the battery reaches 30%.

Torqeedo electric motors are lighter to transport than gas motors and do not require a heavy 12V battery like traditional electric motors. You can also power your Torqeedo Travel 1003s using the new Sea Eagle Solar Canopy which is comprised of a PowerFilm Solar Panel.

Minn Kota & Torqeedo products come with a manufacture warranty and are not covered by the Sea Eagle warranty. All warranty work is handled directly by the respective manufacturer and all sales on these products are final. Please note that it is strongly advised to read all printed materials provided.

Rowing

You may be surprised at how easy it is to row your Sea Eagle 285 Frameless Pontoon Boat. You can row the 285 FPB facing forward or backwards. When you row forwards, you face backwards. This means you will have a great view of where you have been, but almost no view of where you are going. Be sure to check over your shoulder frequently to avoid any obstacles or obstructions. Be aware of the conditions of the water you are rowing in.

You should be aware of any and all obstacles and dangers that you might encounter (i.e. buoys, docks, moored boats, motor boats, sail boats, waves, weather, lightning, rain, etc). Please note to give way to both motor boats and sail boats as they have the right of way.

If you are new to rowing, we suggest that you practice rowing for several hours near the shore before venturing out further onto open waters. Practice only makes perfect and ensures that you are comfortable in your boat in almost any weather conditions you may come across. Continually practice your rowing strokes, trying to make them as fluid and smooth as possible.

When pulling your oars through the water you should try to keep the blades fully immersed in the water, but as close to the surface as possible. This will give you greater rowing leverage. Even if you are motoring your frameless pontoon boat, we always recommend having your oars on board in case of emergency or engine failure.

Safety

In a manual of this type it is impossible to give adequate space to the topic of water safety. For further information on boating safety, visit USCGBoating.org or enroll in one of the excellent water safety courses provided.

It is your responsibility to be aware of and comply with all relevant safety regulations. For all water recreation or sport you should have a reasonable swimming ability. Just as swimmers have a cardinal rule about not swimming alone, it is strongly advised that you should never go boating alone.

Boating Safety Tips

- Always wear a USCG approved PFD (life vest) at all times while on the water.
- Be aware of your local boating rules and regulations and abide by them accordingly.
- Check inflation levels each time before you go out and inflate your boat for a full 24 hours before undertaking long trips.
- DO NOT allow children to use Sea Eagle unsupervised.
- DO NOT consume alcohol while boating or operating a boat while under the influence of alcohol or drugs.
- DO NOT drag your Sea Eagle over rocks or gravel if it can be avoided.
- DO NOT exceed the certified maximum capacities of this boat under any circumstance.
- DO NOT go boating alone.
- DO NOT use compressors, co2 or compressed air for inflation, only use Sea Eagle recommended pumps.
- DO NOT use your Sea Eagle Boat as a personal flotation device as they are designed for leisure/recreation in mind.
- DO NOT sleep inside of your Sea Eagle while on the water.

Safety Equipment

The type of water conditions you are on should determine the type of safety equipment that you should have on board. For all types of boating we strongly recommend that every passenger wear a USCG approved PFD (personal flotation device) like a life vest. In most places this is a requirement by law, but from our point of view it is also an exercise of good judgment to have a PFD for all passengers. Other important items to consider for all types of boating...

Drinking Water & Snacks: Kayaking is a physical activity that can work up both a thirst and a sweat and especially on a hot or warm day it is a good idea to have drinking water readily available to you to prevent dehydration. Bring a good amount of water for all passengers as you want to avoid drinking the water you're kayaking in which may be full of contaminants.

Extra Clothes/Layers: You never know when the weather can change and it's a good idea to come prepared with extra clothing. If you have a dry (waterproof) bag than we recommend storing them inside so they're not damp in case of emergency.

First Aid-Kit: The contents of the kit may vary depending upon your preferences, but make sure to carry a kit that reflects the possible dangers for the conditions you are in.

Foot Pump/Repair Kit: Although our boats are both durable and rugged, it may be possible that you need to make a repair while on the water in which case you'll need the repair kit and the foot pump to re-inflate the boat. If this is your first repair, you may also want to bring this instruction manual with you.

Sun/Rain Protection: A hat can protect both your face and head from the rain or sun. You may also want to carry sunscreen with you as both the sun and the sun's reflection from the water can do serious damage to your skin. If you are out for prolonged periods of time you may need to reapply sunscreen as needed.

Whistle: Having a whistle readily available to you in case of emergency is a great way to attract the attention of others if assistance is needed.

Solo Reboarding

If you find yourself in the water, bring the boat around so you are between the pontoons. Hook your arms over the floor and grab the footrest. With your belly in laying in the water, make a big scissor kick and pull your belly up and into the boat. Turn over and pull legs in.

Inflation Valves & Pumps



Recessed Air Valves

Remove the cap and press and turn the valve stem counterclockwise so that the stem is in the UP position. Only when the stem is in this position the valve will retain air. Turning the stem clockwise will put the valve in the down position for deflation.



BTP Turbo Pump (OPTIONAL)

The BTP Turbo electric pump comes complete with a nylon shoulder carry bag, 12V DC power supply, hose and adapters.



Foot Pump (A-41)

Press the two halves of the foot pump together and connect the hose to the inflation port marked OUT. Insert the valve adapter at the other end of the hose.



Included are a cluster of seven valve adapters, with raised numbers on each arm of the cluster. The adapter marked number 1 is the only adapter needed for your Sea Eagle.



Recessed Adapter

The recessed valve adapter is located inside of the orange repair kit canister. Insert the ribbed end of the valve adapter into the hose on the foot pump. This valve adapter is not compatible for use with electric pumps.



Take adapter number 1 from the cluster and firmly push it into the grey joint that is already connected to the end of the hose. To ensure that the adapter is on as tight as possible, push it against a hard surface like a floor or table once it is connected.



Make sure that the valve stem is in the up position and insert the valve adapter into the valve and turn clockwise to lock into position. Once the desired pressure is reached you should feel resistance on the foot pump.



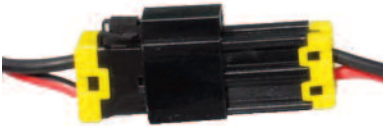
Connect the other end of the hose to the red inflation port at the top of the pump, located near the ON and OFF buttons.



Adjust the pressure dial to read 3.2 PSI which is the operating pressure of your Sea Eagle. PSI is marked in red on the dial. Never turn the dial when the device is under pressure as this will immediately cause the instrument to break.



To charge the portable battery, plug it into the charger and then plug the charger into a household electrical outlet. The light on the battery charger will blink red until fully charged. When it is fully charged the light will be a solid green.



Connect the cord at the end of the power supply into the end of the cord attached to the pump.



It is recommended to keep the Turbo Pump inside of the carry bag to make transportation easier and to protect the pump from sand which could jam it. The carry bag comes equipped with compartments for the pump, battery and charger.



Connect the Turbo Pump to a 12V battery (car or marine) using the alligator clips at the end of the extension cord. Connect the red clip to the positive pole and the black clip to the negative pole.



Press the ON button to begin inflation. The pump operates in two stages which can be identified by the noise of the turbine at the start, followed by the piston. The pump automatically stops once the pressure is reached.



If you ordered the Turbo Pump Kit you can also connect the pump to the portable battery in place of the alligator clips.

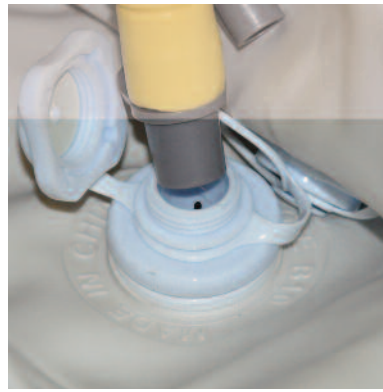


Air compressors that are designed for other uses like tire inflation (usually around 50 PSI) can easily harm your Sea Eagle which works at a much lower pressure of 3.2 PSI. For this reason we recommend only using Sea Eagle pumps.

Assembly & Inflation



Clear a clean and flat space that is free of any sharp objects and unroll the boat hull so that it is laid out flat. There is no pre-assembly required for the FPB, simply unroll the hull and lay both pontoons flat, parallel to each other.



To inflate, locate the triple nozzle adapter and insert the ribbed end of the large round piece into the hose and the other end into the valve. Begin pumping with your foot pump. When you're finished, close the outer cap of the valve.



Please note that if you are installing either the seat mount or a Scotty Rod Holder, you will need a Phillips head Screwdriver to complete the installation.



Deluxe Fishing Seat (OPTIONAL)

Inflate the seat so that its reasonably hard. You should be able to push your finger about $\frac{3}{4}$ ". This seat shouldn't be inflated past 1.1 PSI. Once inflated, sit the seat inside. Please note that the straps are not utilized for this model.



One-Way Air Valves

NOTE: One-way air valves are only found on the (optional) inflatable Deluxe Fishing Seat. Place the retainer ring over the valve base and screw the valve into the base. Unscrew the outer cap on the valve to reveal the inflation port.

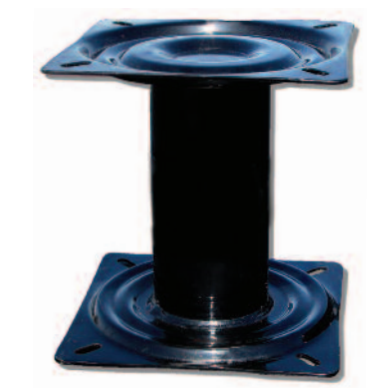


Swivel Seat (OPTIONAL)

The swivel seat can be rotated 360° and offers great back support and sits up high for a greater line of sight and makes rowing easy. The back of the seat folds down for easy transport and storage.



The triple nozzle adapter comes with the A-41 foot pump. Inflate the seat with the large rounded adapter on the triple nozzle with the foot pump. The seat is low pressure and only requires a few pumps. To deflate, unscrew the valve from the base.

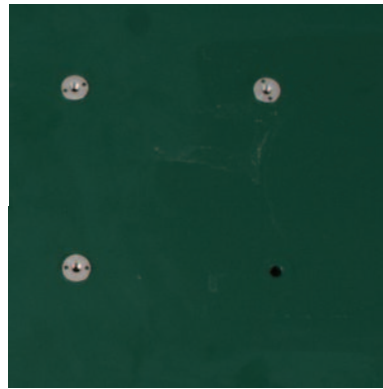


Pedestal (OPTIONAL)

This 7" pedestal places you in the ideal position for rowing, motoring and fishing. Attaches to both the swivel seat and the seat mount.



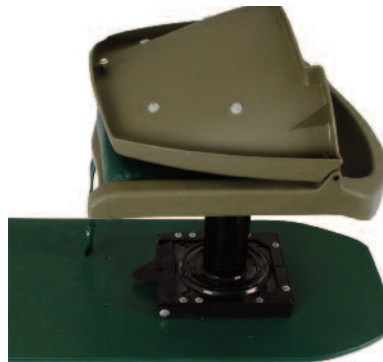
Bolt the upper end of the pedestal directly to the base of the swivel seat using the provided bolts and wing nuts.



Use the T-Nuts on the bottom of the floorboard when securing the bolts to prevent any abrasion between the bolt and the interior floor.

Seat Mount (OPTIONAL)

This release-a-seat mount makes it easy to install or remove the pedestal/swivel seat. Hardware for the seat mount is included and necessary to install it on the floorboard.



Slide the pedestal into the seat mount. Check to make sure that the spring loaded lever mechanism is locked once the seat and pedestal are installed.



Marine Plywood Floor (OPTIONAL)

The floorboard provides a rigid, stable platform for fishermen to stand up and cast from and is necessary in order to use the (optional) seat mount, pedestal and swivel seat (all sold separately).



Partially inflate your boat, enough that it takes a bit of its shape. Install the floorboard into the rails making sure that they grip the floorboard. Inflate your Sea Eagle to capacity. For a proper fit, you may have to readjust the floorboard during the inflation period.

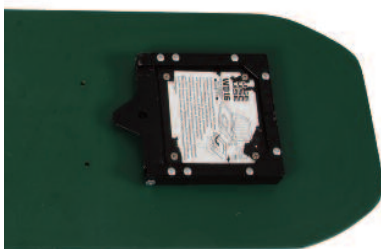


Using the included hardware, attach the seat mount to the pre-drilled holes on the floorboard. There are 2 sets of pre-drilled holes (6 holes in total). For the best performance we recommend using the first 4 pre-drilled holes closest to the front of the floorboard.



IMPORTANT

Make sure you DO NOT place the floorboard on top of the rails. Properly secure the floorboard to the rail to ensure correct use of the product.





Oars

These 5' 2" oars are easily assembled by snapping them into each other. There is a pre-drilled hole in the middle of each oar so you can slide it over the oarlock and then secure the oar in place using the oar stopper.



FPB Motor Mount (OPTIONAL)

The motor mount is easy to assemble. First secure the mounting bracket to the grommets at the rear and then slide the wooden motor mount block into the bracket and secure with the included screws.



Bait Rod Holder (OPTIONAL)

Holds a bait caster reel in a cushioned cradle. Slot in the front allows for a spinning reel to be securely held in place. Includes side/deck mount.



Clip On Stow Pouch

Simply clips on and off in seconds to the bow of your FPB. This 7" x 7 1/2" x 18 1/2" stow pouch is made of a durable nylon and is great for storage. Please note the stow pouch is not waterproof.



Begin by installing the side/deck mount into the glue on pads that are pre-installed on your Frameless Pontoon Boat. Be sure the "logo" on the mount reads upright when looking from inboard before securing the mount with the provided hardware.



Side/Stern Bag (OPTIONAL)

Though not waterproof, they will keep most spray out. To install, simply clip the bag onto the clips attached to the frameless pontoon boat on either side. You may roll the side/stern bags up with your boat for storage.



Next, install the rod holder by pushing the post straight down into the mount. Rod holder is designed to enter the mounting bracket only when pointing inboard and is locked in every other direction.



Stripping Apron (OPTIONAL)

This stripping apron is easily installed and comes complete with fishing ruler printed on.



Mushroom Anchor Kit (OPTIONAL)

8lb. PVC coated Mushroom Anchor with 25' of 5/16" rope and an Anchor Grip to hold the rope in place.



Minn Kota Motors (OPTIONAL)

Minn Kota Motors are the most reliable electric trolling motors on the market. These motors run off a 12v deep cycle marine battery (which is not included or sold by Sea Eagle).



3M Marine Cleaner 303 Protectant (OPTIONAL)

By using our 3M Marine Cleaner and our 303 Protectant sprays you can keep the material on your Sea Eagle Boat looking and feeling like new. Sold separately.



Portable Charger (OPTIONAL)

Protect and preserve your battery life with this portable 10 AMP, Minn Kota battery charger. Features fully automatic 3-stage charging. Weighs 17 lbs. Input: 120V AC Output: DC 12V



Paddling Life Vest (OPTIONAL)

U.S.C.G approved! This type III PFD is great for all boating needs and gives you plenty of arm room in case you feel like rowing. Comes in various sizes with three adjustable buckles and adjustable nylon straps for a tight secure fit.



Battery Power Center (OPTIONAL)

Allows trolling motor leads and charger leads to be connected without opening the box. Built-in battery meter includes two 12-volt accessory plugs and three manual reset circuit breakers. Fits group 24 and 27 size batteries.



Torqeedo 1003s (OPTIONAL)

Weighing just 29.5 lbs with a short shaft of 23", the Torqeedo Travel 1003s delivers the performance of a 3HP gas motor and develops 4-5 times the power of traditional electric motors.



TIP: Never connect the (+) and the (-) terminals of the battery together. Take care that no metal object can fall onto the battery and short the terminals. This would immediately lead to a short and utmost fire danger.

Deflation & Storage

Although PVC material can become brittle in extremely cold temperatures, you can still safely store your Sea Eagle in them so long as you avoid dropping it and do not subject it to any sudden impacts.

If you're planning to leave your Sea Eagle outside, be sure to keep it raised up off of the ground. It's also a good idea to keep it covered so that it is not directly exposed to berries, leaves, rain, sunlight and other elements. A boat that is left in water will most likely have to be emptied from time to time.

Make sure that your boat is dry before storing your kayak for more than a few days, to remove any excess moisture that could cause unsightly mildew. Choose a cool, dry spot when storing in an enclosed area like basement, closet or garage.

Before you begin the deflation process, please keep in mind that you should not fully deflate one chamber while other chambers remain fully inflated as doing this can cause damage to the bulkheads of your boat.



To deflate, press down on the valve stem and turn clockwise to lock into position. Release around 50-75% of the air from each chamber before fully deflating.



Once the boat loses enough air, remove accessories like oars, motor mount, floorboard seats and rod holders. The mounts for the rod holder can stay on when folding your Sea Eagle.



Begin to roll your boat from the stern and as you do, excess air may be released through the air valves in the bow of your boat.



When the excess air has been released you can then fold one of the pontoons over the other and then roll your boat up from stern to bow.



Place the boat at the center of the opened boat bag.



Wrap the boat with the narrow flaps first and then lash them down with the nylon straps. Repeat this process with the wide flaps and nylon straps.

Troubleshooting

If your boat is losing air it doesn't necessarily mean that its leaking. For instance a boat that is inflated late in the day with 90° air may cool 20° overnight. The cooler air will exert less pressure on the hull and the boat will appear softer the next morning. When there has been no variation in temperature and your boat is losing air then it is time to start looking for the leak.

The first thing you should do when looking for a leak is to actually look at the boat. Visually inspect the boat from a few feet away and if necessary, flip it over and closely check the outside. Any large leaks when your boat loses a considerable amount of air should be clearly visible.

Be sure to check the tightness of the one-way recessed valves as well and if necessary, tighten them with the valve wrench included in the orange repair kit canister.

If you have a rough idea of where your leak is but can't see it, you may want to try listening for it as you may be able to hear the air escaping and pinpoint the leak.

Other troubleshooting techniques you can try to locate the leak is to dowse/spray a mix of dishwashing liquid over suspicious areas. The leak may produce bubbles that will pinpoint the location of the leak.

Repairs

Although our Sea Eagles are very rugged and tough, you may still experience the occasional puncture through use of your boat. Fortunately most repairs are fairly easy and only take a few minutes.

For an extensive repair please contact us directly for assistance or a quote to have it sent back and repaired at our facility. Repair fees start at \$75.00 and do not include return shipping charges.



Repair Kit

All Sea Eagles come standard with this repair kit which includes both PVC patches and PVC glue. Repair kits that are included in boat package purchases also include the recessed valve adapter and valve wrench.



PVC Based Glue

For repairs on our boats you will need to use a PVC based glue. We suggest this 12 oz. can of Vyna Bond if you need more glue than what comes standard in the repair kit.



Repair: Pinholes

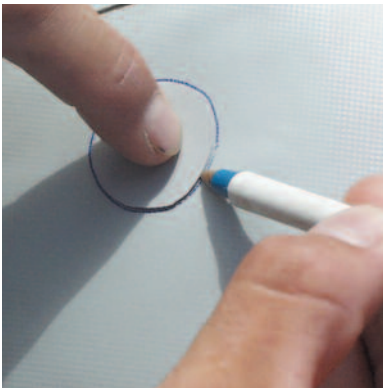
Deflate your boat and thoroughly clean and dry the area that is to be repaired. For small punctures less than 1/8" apply a small drop of glue and allow 12 hours to dry.

For immediate use allow 30 minutes to dry and then inflate the compartment with the repair only 3/4 full and be sure to make a more permanent repair later.



Repair: Patching

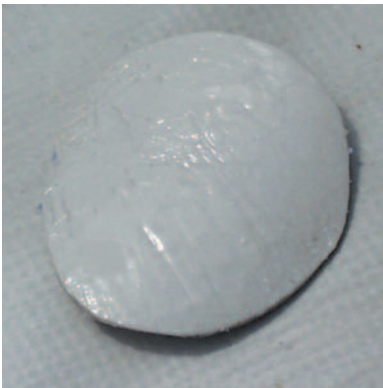
Leaks larger than a pinhole can be patched. Most patches can be done in a few minutes, but we do offer a repair service for more complex jobs out of warranty.



Using a ball point pen, trace the outline of your patch which should be large enough to overlap the damaged area by approximately 1/2". Angle the pen inward a bit so that the ink will be covered by the patch later.



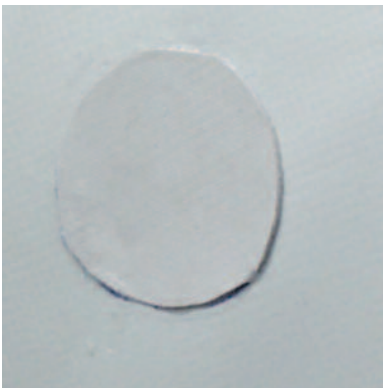
2-Part Adhesive
The adhesive that comes standard in your repair kit works for most repairs and installations, but for more detailed and extensive repair we recommend a 2-part PVC adhesive.



Apply adhesive to the dull side of the patch and around the area to be repaired. Coat the affected area lightly but completely with glue.



Methyl Ethyl Ketone
Methyl Ethyl Ketone or MEK is a solvent used to dissolve PVC based glue in case you need to remove a D-Ring, glue residue or patch. MEK is a strong solvent and can damage the material to the boat so use it very carefully and sparingly.



Place the patch on the damaged area and press down firmly. Let the glue sit for 2-4 minutes until it appears tacky. If glue does not hold, heat patch with a hair dryer.



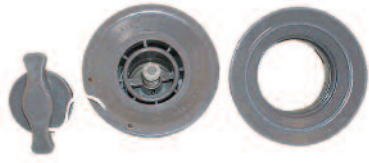
MEK is very flammable, keep away from fire, lit cigarettes or sparks. When handling MEK we recommend wearing rubber gloves. Be sure to use MEK in a well ventilated area and heed all warnings from the manufacturer.



A temperature of 160° degrees will activate the adhesive and from there you can press firmly on the patch until cooled. DO NOT use a hair dryer on an inflated boat and NEVER use a heat gun on your boat.

To remove a patch with MEK, dip a cotton swab and apply it to the outer edges. The glue will start to dissolve and the patch will begin to separate from the boat. Continue to carefully apply MEK to the underneath of the patch and continue peeling it off. Once removed you can also clean off any residual glue with the MEK solvent.

To reapply a new patch, allow approximately 30 seconds for the MEK to evaporate and apply the item to the boat.



Valve Replacement

DO NOT change out the valve unless you are sure it is broken. In most cases the valve will not leak. Because the base of the valve is built into the boat it cannot be replaced without cutting the chamber open.



Should you need to replace the valve than we recommend the following tools and methods. Suggested tools include channel lock pliers, valve wrench (included with your repair kit) vice grip pliers and piece of repair material (also found in the repair kit).



Inflate the chamber to full pressure if possible and loosen with the valve wrench by turning it counterclockwise. Deflate the chamber and unscrew the valve body from the base.



Place the material in the jaws of the channel lock pliers to protect the hull material. Once the body is unscrewed from the base, pull the body from the opening and insert the replacement. base. The opening is very tight, so you may have to pull on it hard.